

Jayco | 2024 Eagle Travel Trailer

EAGLETT

ADVENTURES AROUND EVERY BEND



2+3
YEAR | YEAR
WARRANTY



INTERIOR DESIGN



CLASSIC FARMHOUSE



Main Wood



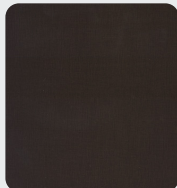
Accent Wood



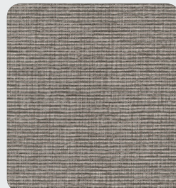
Floor



Countertop



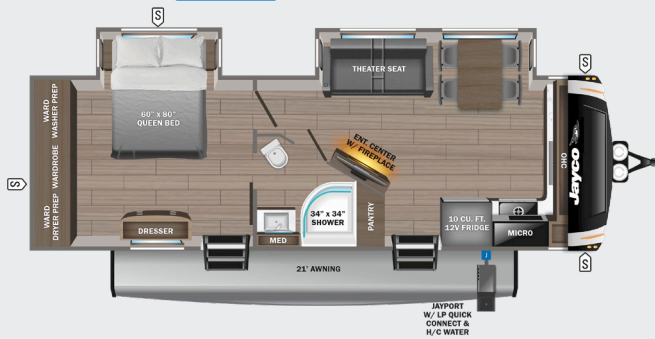
Main Fabric



Accent Fabric

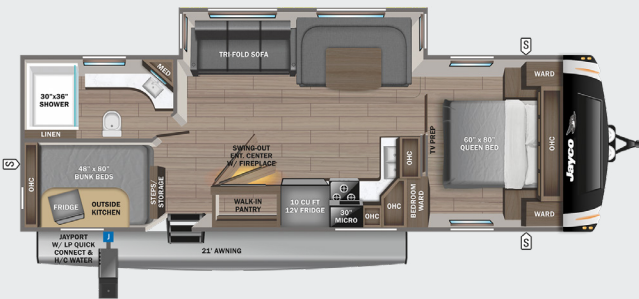
274FKDS

OPTIONS: B, E



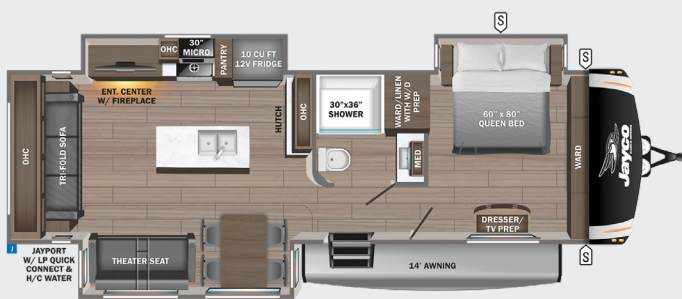
284BHOK

OPTIONS: A, C, D

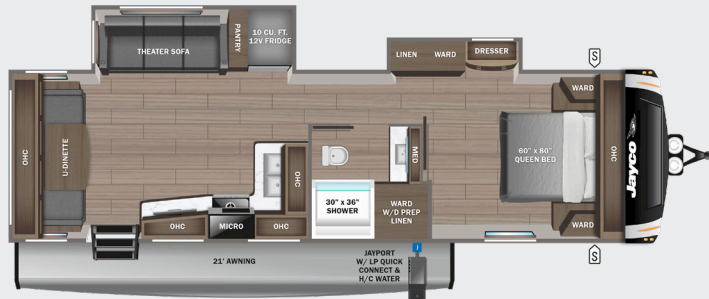


294CKBS

OPTIONS: A, B, E

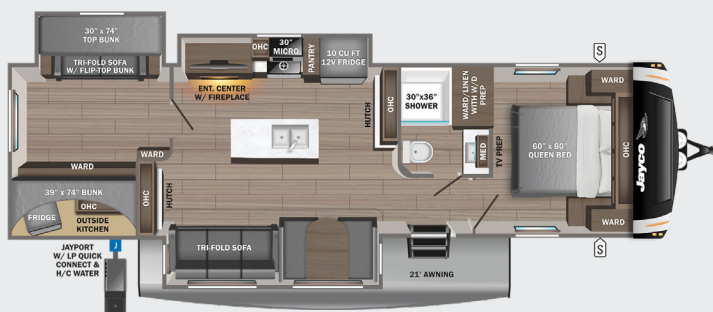


295RUCD



312BHOK

OPTIONS: A, C, D



320FBOK

OPTIONS: C, D, E



OPTIONS

- S** STORAGE
- MICRO** MICROWAVE
- OHC** OVERHEAD CABINETS
- FRIDGE** REFRIGERATOR
- WARD** WARDROBE

- A** Table & Chairs/Bench
- B** Dinette
- C** Table & Chairs
- D** Theater Seat
- E** King Bed

STANDARDS & OPTIONS

EXTERIOR

1.5 in fresh water drain valve
 5 in. Magnum Truss™ Roof System with Alpha roof membrane system with limited lifetime warranty
 50-amp detachable power cord
 LED lighting in pass through area with 3-way switches
 Auto-grade vinyl graphics
 Automotive style painted front cap with max turn radius (painted on select models)
 Battery disconnect in pass through area
 Black tank flush
 Climate Shield™ zero-degree tested weather protection:
 - Fully enclosed and heated underbelly (ducted)
 - 35,000 BTU furnace
 - Double layer fiberglass batt insulation in ceiling and floor
 - Double sided radiant barrier insulation (roof, floor and behind cap)
 - PEX plumbing
 Commercial grade rubber flooring in pass through area
 Digital TV antenna with WiFi prep
 Dual 30 lb. propane bottles
 Dual channel exterior speaker
 Factory installed roof ladder
 Galvanized steel coated outside kitchens
 HELIX Cooling System™ (industry exclusive):
 - Jayco exclusive insulated dual duct design
 - Directional and closeable A/C vents
 - Larger return air vents with user accessible filters
 Independent satellite and cable hookups
 JaySMART™ (Safety Marker And Reverse Travel) exterior LED lights
 LED exterior lighting package
 Propane quick connect for gas griddle (next to JayPort)
 Metal slam latch baggage doors
 Nautilus 2.5 water connections
 Nitrogen filled undermount spare tire (model/option varies 15 in. or 16 in.)
 Quick connect water connections (door side hot/cold and off door side cold only)
 Slide topper/awning prep
 Stronghold VBL™ walls (laminated sidewalls, rear walls and slide out walls)

INTERIOR

2 piece high gloss bathroom surround
 5/8 in. tongue-and-groove plywood flooring
 75 lb. full extension drawer guides

90 in. x 92 in. residential quilted bedspread (both queen and king mattresses)
 Bathroom skylight
 Bedroom TV prep
 C.P.A.P. prepped bedroom
 Extra 120V power outlets in kitchen and slide rooms (where applicable)
 Furniture cup holder tables (1 pair)
 Gas strutted under bed storage
 Handcrafted and glazed door/drawer fronts (new sizes)
 Inverter pre-wire (multiple locations)(7) 110 outlets)(6 USB's 12V)
 LED backlit medicine cabinet with custom framed mirror
 LED lights with dimmer switches and motion activated (throughout interior)
 Matte black kitchen faucet with pull-out sprayer
 Porcelain foot flush toilet
 Residential 60 in. x 80 in. queen size mattress
 Residential vinyl flooring throughout
 Solid hardwood slide fascia
 Stainless steel kitchen sink
 Theater seating (select models)
 Tri-fold hide-a-bed sofa with residential memory foam sleep surface (select models)
 USB charging ports (multiple locations throughout)

CUSTOMER VALUE PACKAGE (MANDATORY)

15K BTU "Whisper Quiet" A/C and bedroom A/C prep
 43 in. 4K Ultra LED HD Smart TV in living room
 50-amp service with dual A/C ducts
 60K on-demand water heater with mixing tank
 Custom machined aluminum rims
 Electric patio awning with integrated dimmable LED lights
 GE 30 in. over-the-range black and stainless microwave with exhaust fan
 GE black and stainless 21 in. range with edge to edge grates
 Hidden hinges on cabinet doors
 JBL Aura Bar 12V with Bluetooth® and dual HDMI (dual zone)
 Keyed-Alike™ lock system
 MORryde Step Above™ entrance steps (main entrance) with blue LED
 Rain proof bathroom power vent
 Rear 2 in. accessory receiver
 Security monitor prep (rear, sides and entrance door)
 Upgraded friction hinge entrance door

LUXURY PACKAGE (MANDATORY)

Blackout roller shades with reflective side throughout
 Electric leveling front legs with electric rear stabilizer jacks
 GE 10 cu.ft. 12V refrigerator
 JAYCOMMAND® "Smart RV System" (Pro Tablet)
 JayPort 2 in. mount (for outside accessories)
 LED fireplace with 5,000 BTU electric space heater (select models)
 MORryde Safe-T-Rail grab handle
 Overlander 1 Solar Package (200W panel and 30-amp solar controller)
 Residential style glass shower door
 TPMS (Tire Pressure Monitoring System) in-stem monitoring
 Washer/dryer prep (select models)

5 STAR HANDLING PACKAGE (MANDATORY)

Dexter® ABS brake system with anti-sway
 Dexter® Axles with NEV-R-Adjust® brakes and E-Z Lube® hubs
 Goodyear® Endurance® tires (load range E)
 MORryde® CRE-3000™ rubberized suspension
 Wet bolt fasteners with bronze bushings

OPTIONS

15,000 BTU bedroom A/C
 22 in. outside griddle with deep sink attachment for JayPort system
 360 degree security monitor kit with 7 in. view
 Booth dinette (select models)
 Dry Camping Package (generator prep and extra propane capacity)
 Electric auto-leveling
 Extreme Weather Package with 120 heat pads (12V heat tape on fresh water)
 Frameless dual pane windows
 Free standing table with leaf and bench seat, 2 storage chairs and 2 folding chairs
 Free standing table with leaf, 2 storage chairs and 2 folding chairs in place of booth dinette
 LED fireplace with 5,000 BTU electric space heater (select models)
 Overlander 2 Solar Package: (2) 200W panels, MPPT 30-amp solar controller and 1800W inverter)
 Overlander 4 Solar Package: (4) 200W panels, (2) 100AH lithium batteries, 60-amp MPPT solar controller, 3000 W split phase inverter/charger, DC/DC power converter, soft start 15,000 A/C with heat pump, battery monitor, roof pre-wire solar, generator option, battery enclosed)
 Residential 72 in. x 80 in. king size mattress (select models)
 Theater seating in place of tri-fold sofa (select models)

*Indicates split tanks

FLOORPLAN	TOTAL EXTERIOR LENGTH	EXTERIOR WIDTH	EXTERIOR HEIGHT (WITH A/C)	INTERIOR HEIGHT	UNLOADED VEHICLE WEIGHT	DRY HITCH WEIGHT	GVWR	CARGO CARRYING CAPACITY	FRESH WATER CAPACITY	GRAY WASTE WATER CAPACITY	BLACK WASTE WATER CAPACITY	SLEEPING CAPACITY
274FKDS	34' 10"	8' 1"	11' 7"	7' 0"	8,585	1,120	10,600	2,015	81	111*	37	2-4
284BHOK	34' 10"	8' 1"	11' 8"	7' 0"	7,855	1,055	9,995	2,140	81	74*	37	6-8
294CKBS	38' 0"	8' 1"	11' 10"	7' 0"	9,460	1,210	11,450	1,990	81	74*	37	4-6
295RUCD	33' 10"	8' 1"	11' 8"	7' 0"	8,282	1,046	10,250	1,968	81	74*	37	4-6
312BHOK	38' 9"	8' 1"	11' 11"	7' 0"	9,870	1,350	11,500	1,630	81	74*	37	8-10
320FBOK	38' 0"	8' 1"	11' 9"	7' 0"	9,085	1,230	11,000	1,915	81	74*	37	4-6

Meet your Jayco Dealer



Scan QR code for specification definitions

Some specs at the time of print may include estimates. For the most updated information, please visit Jayco.com

Jayco, Inc. | P.O. Box 460 | Middlebury, IN 46540

See dealer for further information and prices. All information in this brochure and on www.jayco.com is the latest available at the time of publication approval. Jayco reserves the right to make changes and to discontinue models without notice or obligation. Photography may show optional equipment or props used for decoration purposes only. RVs built for sale in Canada may differ to conform to Canadian codes. JAYCO and the JAYCO BIRD IN FLIGHT are registered trademarks of Jayco, Inc. Printed in USA 3/24 ©2024 Jayco, Inc.



Jayco - Part of Jayco Family of Companies