

Jayco | 2026 Eagle HT Travel Trailer



# EAGLE HT TRAVEL TRAILER

ADVENTURES AROUND EVERY BEND



**2+3**  
YEAR | YEAR  
LIMITED STRUCTURAL  
WARRANTY





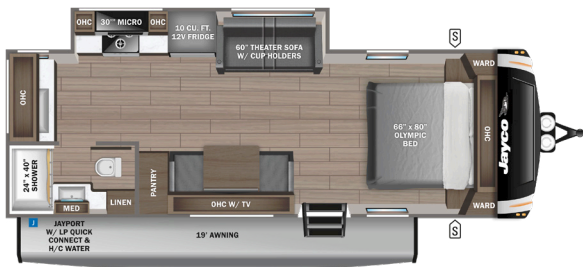




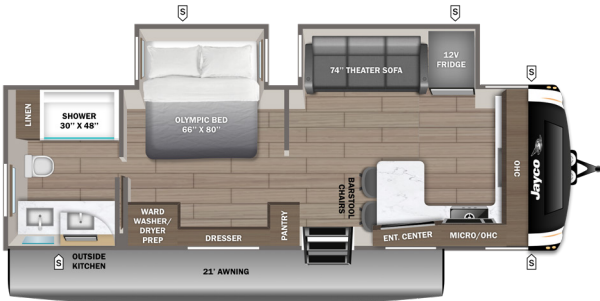
# EAGLE HT TRAVEL TRAILER



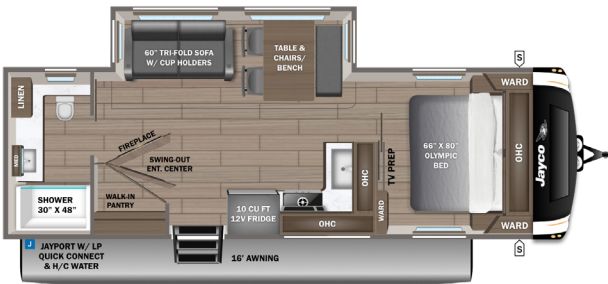
230MLCS    OPTION: F



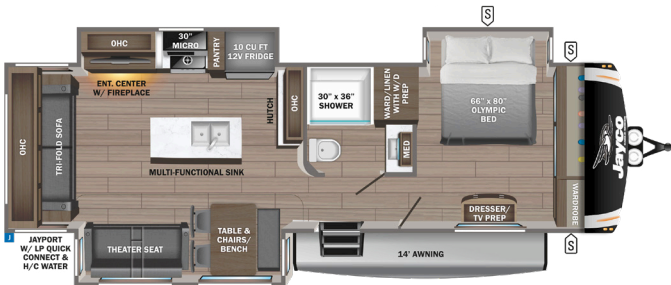
265FKDS    OPTIONS: E, F



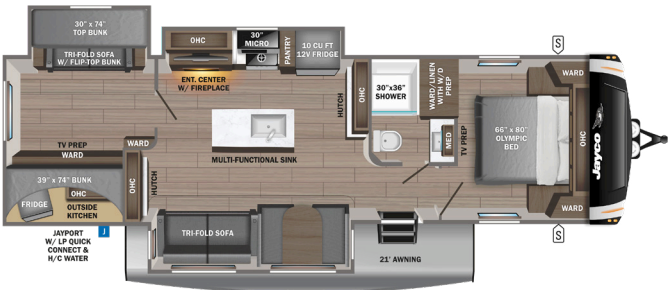
275RBCS    OPTIONS: B, D, F



294CKBS    OPTIONS: B, E, F



312BHK    OPTIONS: A, C, D, F



320MKTS    OPTIONS: B, C, D, E, F



- STORAGE
- MICRO** MICROWAVE
- OHC** OVERHEAD CABINETS
- FRIDGE** REFRIGERATOR
- WARD** WARDROBE

## OPTIONS



# STANDARDS & OPTIONS

## EXTERIOR

5 in. fresh water drain valve  
 5 in. Magnum Truss™ with plywood roof decking  
 AlphaPly TPO roof membrane (thickest roof membrane with limited lifetime warranty)  
 50-amp detachable power cord  
 LED lighting in pass-through area  
 Auto-grade vinyl graphics  
 Automotive-style front cap with max turn radius (painted on select models)  
 Black tank flush  
 Additional dump valve at termination  
 LED light and switch at termination  
**Climate Shield™ zero-degree tested weather protection:**  
 - Fully enclosed and heated underbelly (ducted)  
 - 35K BTU furnace  
 - Double-layer fiberglass batt insulation in ceiling and floor  
 - Double-sided radiant barrier insulation (roof, floor, and behind cap)  
 - PEX plumbing  
 Dual 30 lb. LP bottles  
 Factory-installed roof ladder  
 Galvanized steel coated outside kitchens  
**HELIX Cooling System™ (industry exclusive):**  
 - Insulated dual-duct design  
 - Directional and closeable A/C vents  
 - Larger return air vents with user-accessible filters  
 Independent satellite and cable hookups (outside kitchens and/or pass-through storage areas)  
 LED exterior lighting package  
 LP quick connect for gas griddle (next to JayPort®)  
 Metal slam-latch baggage doors  
 Nautilus 2.5 water connections  
 Nitrogen-filled undermount spare tire (model/option varies)  
 Quick-connect water connections (door side hot/cold and off-door side cold only)  
 Slide topper/awning prep  
 Stronghold VBL™ walls (laminated sidewalls, rear walls, and slide-out walls)  
 Rear camera prep  
 30 x 22 in. shower skylight

## INTERIOR

100% no floor vents  
 2-piece high-gloss bathroom surround  
 5/8 in. tongue-and-groove plywood flooring

75 lb. full-extension drawer guides  
 Bathroom skylight  
 Bedroom TV, satellite, and cable prep  
 CPAP-prepped bedroom (both sides)  
 Extra 120V power outlets in kitchen and slide rooms (where applicable)  
 Gas-strutted under-bed storage  
 Handcrafted and glazed door/drawer fronts  
 LED fireplace with 5K BTU electric space heater (select models)  
 Matte black kitchen faucet with pull-out sprayer  
 Medicine cabinet with custom-framed mirror  
 NuvoH2O Water Treatment System (filters included)  
 Porcelain foot-flush toilet  
 Residential vinyl flooring throughout (no carpet)  
 Solid hardwood slide fascia  
 Teak seat shower prep  
 Theater seating (select models)  
 Tri-fold hide-a-bed sofa with residential memory foam sleep surface (select models)  
 USB-C 12V charging ports (multiple locations throughout)  
 Water shut off at all faucet locations  
 4 in. interior ceiling can light (4K lumen)

## CUSTOMER VALUE PACKAGE (MANDATORY)

15K BTU "Whisper Quiet" A/C and bedroom A/C prep  
 4K Ultra LED HD Smart TV in living room  
 50-amp service with dual A/C ducts  
 60K on-demand tankless water heater  
 Custom-machined aluminum rims  
 Electric patio awning (integrated dimmable LED lights with JAYCOMMAND™)  
 Hidden hinges on cabinet doors  
 Interior & exterior Blue Sync™ Audio Connect with MB Quart sound (TV & phone)  
 Keyed-Alike™ lock system  
 MORyde StepAbove™ entrance steps (main entrance) with blue LED light  
 Rain-proof bathroom power vent  
 Winegard® Air 360+ antenna and router prep (now 5G)  
 Inverter pre-wire (multiple locations throughout)  
 Overlander I Solar Package (200W panel and 30-amp solar controller)

## LUXURY PACKAGE (MANDATORY)

Blackout roller shades with reflective side throughout  
 GE black glass 10 cu. ft. 12V refrigerator  
 JayPort® 2 in. mount (for outside accessories)  
 Residential-style glass shower door  
 Washer/dryer prep (select models)  
 GE 30 in. over-the-range black and stainless microwave with exhaust fan  
 GE black and stainless 21 in. range with edge-to-edge grates  
 Inverter pre-wire (multiple locations throughout)  
 Multi-function "All-in-One" black stainless-steel kitchen sink  
 Residential 66 x 80 in. Olympic-size mattress  
 Magnetic catches for all drawers and doors  
 Solid-surface kitchen countertop(s)  
 LED fireplace with 5K BTU electric space heater (select models)  
 JAYCOMMAND™ with monitor switch panel  
 Exterior light and outlet at the JayPort® location

## 4-STAR HANDLING PACKAGE (MANDATORY)

Dexter® axles with NEV-R-Adjust® brakes and E-Z Lube® hubs  
 Rainier "E"-rated tires or Rainier "H"-rated tires  
 MORyde® CRE-3000™ rubberized suspension  
 Wet-bolt fasteners with bronze bushings

## OPTIONS

15K BTU bedroom A/C  
 HALO™ 22 in. outside griddle with deep sink attachment for JayPort® system  
 Booth dinette (select models)  
 Extreme Weather Package with 120 heat pads and 12V heat tape on freshwater line  
 Frameless dual-pane windows  
 Free-standing table with leaf, (2) chairs, and bench seat  
 Overlander 2 Solar Package: (2) 200W panels, MPPT 30-amp solar controller, and 1800W inverter  
 Residential 72 x 80 in. king-size mattress (select models)  
 Theater seating in place of tri-fold sofa (select models)  
 Furniture cupholder tables (1 pair)  
 Dexter® ABS brake system with anti-sway  
 Triple-reclining sofa in place of dinette (select models)  
 SpartanLync™ TPMS monitoring  
 Electric auto-leveling

\*Indicates split tanks

FLOORPLAN	TOTAL EXTERIOR LENGTH	EXTERIOR WIDTH	EXTERIOR HEIGHT (WITH A/C)	INTERIOR HEIGHT	UNLOADED VEHICLE WEIGHT	DRY HITCH WEIGHT	GVWR	CARGO CARRYING CAPACITY	FRESH WATER CAPACITY	GRAY WASTE WATER CAPACITY	BLACK WASTE WATER CAPACITY	SLEEPING CAPACITY
230MLCS	27' 7"	8' 1"	11' 8"	7' 0"	6,560	710	8,400	1,840	52	74*	37	1-3
265FKDS	31' 7"	8' 1"	TBD	7' 0"	TBD	TBD	TBD	TBD	51	74*	37	2-4
275RBCS	30' 1"	8' 1"	11' 8"	7' 0"	7,270	900	9,400	2,130	52	74*	37	1-2
294CKBS	37' 11"	8' 1"	11' 11"	7' 0"	9,660	1,290	11,700	2,040	52	74*	37	4-6
312BHOK	38' 8"	8' 1"	11' 11"	7' 0"	10,015	1,380	11,995	1,980	52	74*	37	8-10
320MKTS	36' 8"	8' 1"	TBD	7' 0"	9,280	1,190	11,500	1,098	51	74*	37	2-4

Meet your Jayco Dealer



Scan QR code for specification definitions



Some specs at the time of print may include estimates. For the most updated information, please visit [Jayco.com](https://www.jayco.com)

Jayco, Inc. | P.O. Box 460 | Middlebury, IN 46540

See dealer for further information and prices. All information in this brochure and on [www.jayco.com](https://www.jayco.com) is the latest available at the time of publication approval. Jayco reserves the right to make changes and to discontinue models without notice or obligation. Photography may show optional equipment or props used for decoration purposes only. RVs built for sale in Canada may differ to conform to Canadian codes. JAYCO and the JAYCO BIRD IN FLIGHT are registered trademarks of Jayco, Inc. Printed in USA 010/25 ©2025 Jayco, Inc. 2033106

Jayco - Part of Jayco Family of Companies