

Jayco | 2025 Swift Class B Motorhome



# 2025 SWIFT PUSH BOUNDARIES

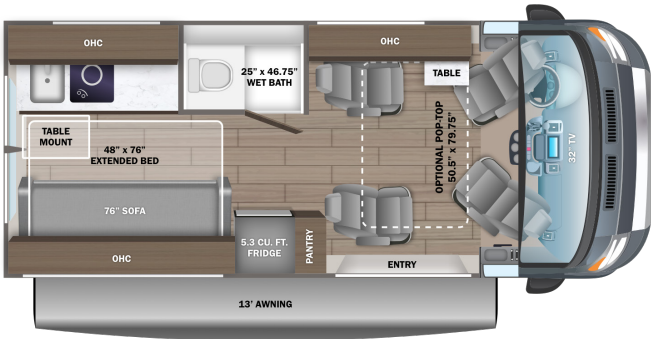
**2**  
YEAR  
LIMITED  
WARRANTY



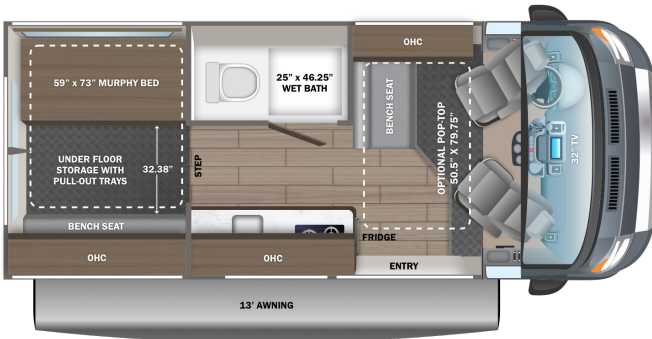




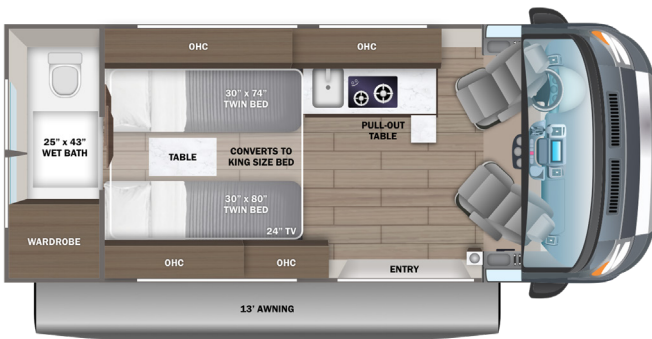
20A



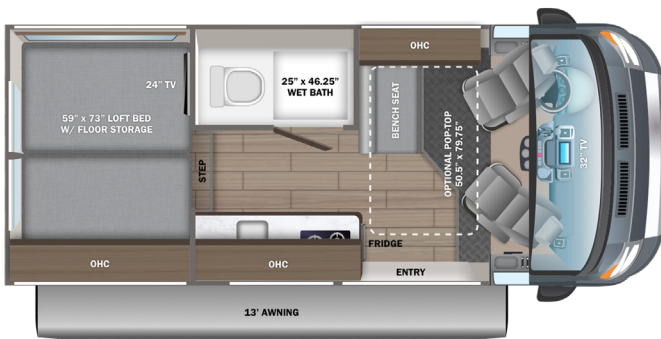
20E OPTIONS: A, B



20T



20Y OPTIONS: A, B



OPTIONS

A

Rear Seats

B

Work Station

EXTERIOR SELECTIONS



Silver Van



Granite Van

# STANDARDS & OPTIONS

## CUSTOMER VALUE PACKAGE

JRide®: Hellwig helper springs, premium heavy-duty suspension  
Thule® patio awning with LED light strip  
Truma Combi Eco Plus water heater and furnace  
Swivel driver and passenger seats with 6-way lumbar adjustment  
Aqua View® SHOWERMISER™ water management system  
1,000W inverter

## DRIVING

RAM® ProMaster 3500 window van  
GVWR- 9,350 lb.  
GCWR- 12,000 lb.  
3.6L V6 24V VVT 276HP engine with 250 ft.-lb. torque  
9-speed automatic 948TE transmission  
LT225/75R 16E tires  
Aluminum wheels  
3,500 lb. rear hitch receiver with dual 4/7 pin connector  
12V chassis battery  
24 gal. fuel tank (gas)  
Uconnect® 5 NAV infotainment center with Apple CarPlay® and Android Auto™  
Power folding/heated side-view mirrors  
Push-button start  
ParkView® rear backup camera with dynamic gridlines  
Blind spot monitoring with rear cross path detection  
LaneSense® lane departure warning with lane keep assist  
Forward collision warning with active braking  
Crosswind assist  
Electronic stability control  
Pedestrian/cyclist emergency braking  
Traffic sign information  
Drowsy driver detection  
Rain-sensitive windshield wipers  
Automatic high-beam headlights  
Cruise control  
Driver and passenger airbags  
Wireless charging pad  
Power windows and door locks  
Privacy shades for cab windows  
Remote keyless entry

## EXTERIOR

LED-lit running boards for cab and entry doors  
Chrome grille package  
Cable TV hookup with RG-6 coax  
Onan® 2,800W generator with auto-gen start  
Thule® roof rack (N/A with pop-top option)  
(2) 12V AGM house batteries  
House battery disconnect switch  
30-amp electrical service with detachable power cord  
(2) 120V exterior outlets

6 gal. propane tank (20 lb.)  
LP quick-connect hookup  
Heated holding tanks (12V pads)  
LED-lit holding tank valves  
Black tank flush  
Gravity water fill (20T)  
Winterization drain system  
12V demand water pump  
Water filtration system  
Outside shower

## INTERIOR

Custom-molded ABS interior wall panels  
Soft-touch vinyl ceiling  
High-intensity LED ceiling lights  
Tecnoform® European-style, high-gloss cabinetry  
Ball-bearing drawer guides  
Residential vinyl flooring  
Firefly total coach control system with wall-mounted touchscreen  
120V Coleman®-Mach® 10 13,500 BTU air conditioner  
Powered roof vent in living area  
Zip-up screen for entrance door  
Removable privacy shade for sliding door window  
Sliding vented windows  
Decorative window valances with day/night roller shades  
Zip-up screen for rear doors (20A)  
Rear magnetic privacy shades  
Adjustable table with multiple mounts  
(2) cab bucket seats (20A)  
5.3 cu.ft. DC refrigerator (20A)  
3.1 cu.ft. DC refrigerator (20T)  
3 cu.ft. DC refrigerator (20E, 20Y)  
Convection microwave  
2-burner gas cooktop (1-burner induction with pop-top option)  
Stainless-steel sink with cover  
Pressed kitchen countertops  
Pop-up 120V/USB outlet in kitchen  
(2) twin-size beds with filler cushion converts to king-size bed (20T)  
Under-bed storage (20T)  
48 in. x 76 in. convertible sofa bed (20A)  
59 in. x 73 in. Murphy bed (20E)  
Under-floor storage with pull-out trays (20E)  
59 in. x 73 in. loft bed with floor storage (20Y)  
Bathroom wardrobe with drawers (20T)  
Shower with magnetic curtain surround  
Toilet with foot flush  
Medicine cabinet with mirror  
Powered roof vent in bathroom (N/A with pop-top option)  
Seatbelts for driver/passenger seats and select cab locations  
Driver and passenger airbags

Smoke alarm  
Carbon monoxide detector  
Fire extinguisher

## OPTIONS

50.5 in. x 79.5 in. pop-top (20A, 20E, 20Y)  
(2) additional cab seats with slide and recline features ILO bench seat (20E, 20Y)  
32 in. front TV on drop-down bracket (20A, 20E, 20Y)  
24 in. rear TV on swivel bracket (20T, 20Y)  
Workstation ILO bench seat (20E, 20Y)  
Winegard® Connect 2.0 4G/Wi-Fi/digital TV antenna  
Li Package  
- 48V-165 amp hour smart lithium battery providing 7.9KW hours of power IPO 2,800W generator  
- Auto engine start with high idle  
- 3,000W inverter IPO 1,000W inverter  
- 2nd 48V alternator dedicated to lithium battery  
- Timberline hydronic heating system IPO Truma Combi Eco Plus water heater and furnace  
- 48V Coleman®-Mach® 10 13.5K BTU air conditioner IPO 120V Coleman®-Mach® 10 13.5K BTU air conditioner  
- 1-burner induction cooktop IPO 2-burner gas cooktop  
- No propane - all-electric coach



### HELLWIG® HELPER SPRINGS

Work with the chassis' existing springs to give the RV more support, improving stability under heavy loads

### PREMIUM HEAVY-DUTY SUSPENSION

With a heavy-duty rear stabilizer bar, shocks, and leaf springs, body roll is significantly reduced.

FLOORPLAN	GVWR (lbs.)	GCWR (lbs.)	WHEEL BASE	OVERALL LENGTH	EXTERIOR HEIGHT WITH SATELLITE AND A/C	EXTERIOR WIDTH	INTERIOR HEIGHT	FRESH WATER CAPACITY (gal.)	GRAY WASTE WATER CAPACITY (gal.)	BLACK WASTE WATER CAPACITY (gal.)
20A	9,350	12,000	159"	20' 11"	9' 3"	83"	74"	21	13/14	10
20E	9,350	12,000	159"	20' 11"	9' 3"	83"	74"	21	20	10
20T	9,350	12,000	159"	20' 11"	9' 3"	83"	74"	24	13	12
20Y	9,350	12,000	159"	20' 11"	9' 3"	83"	74"	21	20	10

Meet your Jayco Dealer



Scan QR code for specification definitions

Some specs at the time of print may include estimates. For the most updated information, please visit [Jayco.com](http://Jayco.com)

Jayco, Inc. | P.O. Box 460 | Middlebury, IN 46540

See dealer for further information and prices. All information in this brochure and on [www.jayco.com](http://www.jayco.com) is the latest available at the time of publication approval. Jayco reserves the right to make changes and to discontinue models without notice or obligation. Photography may show optional equipment or props used for decoration purposes only. RVs built for sale in Canada may differ to conform to Canadian codes. JAYCO and the JAYCO BIRD IN FLIGHT are registered trademarks of Jayco, Inc. Printed in USA 3/25 ©2025 Jayco, Inc. 2032950

Jayco - Part of the Jayco Family of Companies

