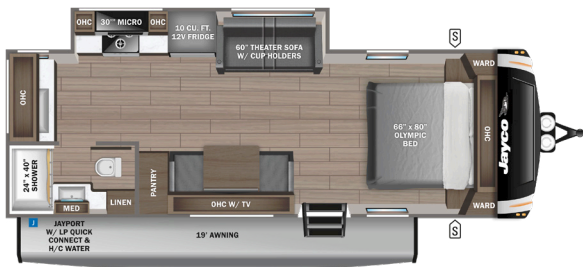


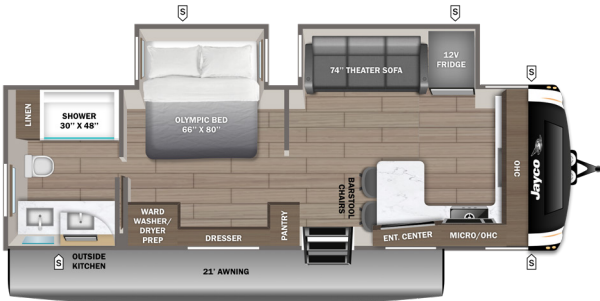
EAGLE HT TRAVEL TRAILER



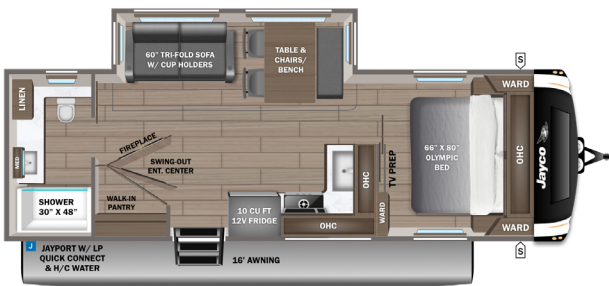
230MLCS OPTION: F



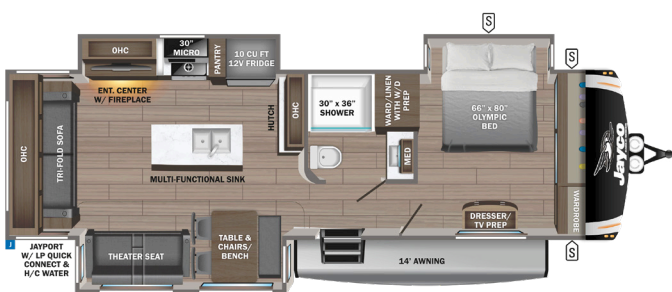
265FKDS OPTIONS: E, F



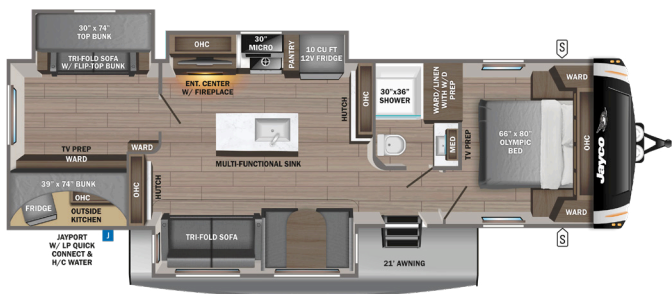
275RBCS OPTIONS: B, D, F



294CKBS OPTIONS: B, E, F



312BHK OPTIONS: A, C, D, F

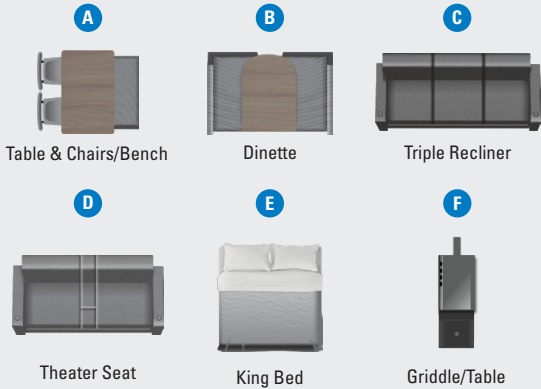


320MKTS OPTIONS: B, C, D, E, F



- STORAGE
- MICRO** MICROWAVE
- OHC** OVERHEAD CABINETS
- FRIDGE** REFRIGERATOR
- WARD** WARDROBE

OPTIONS



STANDARDS & OPTIONS

EXTERIOR

- 5 in. fresh water drain valve
- 5 in. Magnum Truss™ with plywood roof decking
- AlphaPly TPO roof membrane (thickest roof membrane with limited lifetime warranty)
- 50-amp detachable power cord
- LED lighting in pass-through area
- Auto-grade vinyl graphics
- Automotive-style front cap with max turn radius (painted on select models)
- Black tank flush
- Additional dump valve at termination
- LED light and switch at termination
- Climate Shield™ zero-degree tested weather protection:**
 - Fully enclosed and heated underbelly (ducted)
 - 35K BTU furnace
 - Double-layer fiberglass batt insulation in ceiling and floor
 - Double-sided radiant barrier insulation (roof, floor, and behind cap)
 - PEX plumbing
- Dual 30 lb. LP bottles
- Factory-installed roof ladder
- Galvanized steel coated outside kitchens
- HELIX Cooling System™ (industry exclusive):**
 - Insulated dual-duct design
 - Directional and closeable A/C vents
 - Larger return air vents with user-accessible filters
- Independent satellite and cable hookups (outside kitchens and/or pass-through storage areas)
- LED exterior lighting package
- LP quick connect for gas griddle (next to JayPort®)
- Metal slam-latch baggage doors
- Nautilus 2.5 water connections
- Nitrogen-filled undermount spare tire (model/option varies)
- Quick-connect water connections (door side hot/cold and off-door side cold only)
- Slide topper/awning prep
- Stronghold VBL™ walls (laminated sidewalls, rear walls, and slide-out walls)
- Rear camera prep
- 30 x 22 in. shower skylight

INTERIOR

- 100% no floor vents
- 2-piece high-gloss bathroom surround
- 5/8 in. tongue-and-groove plywood flooring

- 75 lb. full-extension drawer guides
- Bathroom skylight
- Bedroom TV, satellite, and cable prep
- CPAP-prepped bedroom (both sides)
- Extra 120V power outlets in kitchen and slide rooms (where applicable)
- Gas-strutted under-bed storage
- Handcrafted and glazed door/drawer fronts
- LED fireplace with 5K BTU electric space heater (select models)
- Matte black kitchen faucet with pull-out sprayer
- Medicine cabinet with custom-framed mirror
- NuvoH2O Water Treatment System (filters included)
- Porcelain foot-flush toilet
- Residential vinyl flooring throughout (no carpet)
- Solid hardwood slide fascia
- Teak seat shower prep
- Theater seating (select models)
- Tri-fold hide-a-bed sofa with residential memory foam sleep surface (select models)
- USB-C 12V charging ports (multiple locations throughout)
- Water shut off at all faucet locations
- 4 in. interior ceiling can light (4K lumen)

CUSTOMER VALUE PACKAGE (MANDATORY)

- 15K BTU "Whisper Quiet" A/C and bedroom A/C prep
- 4K Ultra LED HD Smart TV in living room
- 50-amp service with dual A/C ducts
- 60K on-demand tankless water heater
- Custom-machined aluminum rims
- Electric patio awning (integrated dimmable LED lights with JAYCOMMAND™)
- Hidden hinges on cabinet doors
- Interior & exterior Blue Sync™ Audio Connect with MB Quart sound (TV & phone)
- Keyed-Alike™ lock system
- MORryde StepAbove™ entrance steps (main entrance) with blue LED light
- Rain-proof bathroom power vent
- Winegard® Air 360+ antenna and router prep (now 5G)
- Inverter pre-wire (multiple locations throughout)
- Overlander I Solar Package (200W panel and 30-amp solar controller)

LUXURY PACKAGE (MANDATORY)

- Blackout roller shades with reflective side throughout
- GE black glass 10 cu. ft. 12V refrigerator
- JayPort® 2 in. mount (for outside accessories)
- Residential-style glass shower door
- Washer/dryer prep (select models)
- GE 30 in. over-the-range black and stainless microwave with exhaust fan
- GE black and stainless 21 in. range with edge-to-edge grates
- Inverter pre-wire (multiple locations throughout)
- Multi-function "All-in-One" black stainless-steel kitchen sink
- Residential 66 x 80 in. Olympic-size mattress
- Magnetic catches for all drawers and doors
- Solid-surface kitchen countertop(s)
- LED fireplace with 5K BTU electric space heater (select models)
- JAYCOMMAND™ with monitor switch panel
- Exterior light and outlet at the JayPort® location

4-STAR HANDLING PACKAGE (MANDATORY)

- Dexter® axles with NEV-R-Adjust® brakes and E-Z Lube® hubs
- Rainier "E"-rated tires or Rainier "H"-rated tires
- MORryde® CRE-3000™ rubberized suspension
- Wet-bolt fasteners with bronze bushings

OPTIONS

- 15K BTU bedroom A/C
- HALO™ 22 in. outside griddle with deep sink attachment for JayPort® system
- Booth dinette (select models)
- Extreme Weather Package with 120 heat pads and 12V heat tape on freshwater line
- Frameless dual-pane windows
- Free-standing table with leaf, (2) chairs, and bench seat
- Overlander 2 Solar Package: (2) 200W panels, MPPT 30-amp solar controller, and 1800W inverter
- Residential 72 x 80 in. king-size mattress (select models)
- Theater seating in place of tri-fold sofa (select models)
- Furniture cupholder tables (1 pair)
- Dexter® ABS brake system with anti-sway
- Triple-reclining sofa in place of dinette (select models)
- SpartanLync™ TPMS monitoring
- Electric auto-leveling

*Indicates split tanks

FLOORPLAN	TOTAL EXTERIOR LENGTH	EXTERIOR WIDTH	EXTERIOR HEIGHT (WITH A/C)	INTERIOR HEIGHT	UNLOADED VEHICLE WEIGHT	DRY HITCH WEIGHT	GVWR	CARGO CARRYING CAPACITY	FRESH WATER CAPACITY	GRAY WASTE WATER CAPACITY	BLACK WASTE WATER CAPACITY	SLEEPING CAPACITY
230MLCS	27' 7"	8' 1"	11' 8"	7' 0"	6,560	710	8,400	1,840	52	74*	37	1-3
265FKDS	31' 7"	8' 1"	TBD	7' 0"	TBD	TBD	TBD	TBD	51	74*	37	2-4
275RBCS	30' 1"	8' 1"	11' 8"	7' 0"	7,270	900	9,400	2,130	52	74*	37	1-2
294CKBS	37' 11"	8' 1"	11' 11"	7' 0"	9,660	1,290	11,700	2,040	52	74*	37	4-6
312BHOK	38' 8"	8' 1"	11' 11"	7' 0"	10,015	1,380	11,995	1,980	52	74*	37	8-10
320MKTS	36' 8"	8' 1"	TBD	7' 0"	9,280	1,190	11,500	1,098	51	74*	37	2-4

Meet your Jayco Dealer



Some specs at the time of print may include estimates. For the most updated information, please visit [Jayco.com](https://www.jayco.com)

Jayco, Inc. | P.O. Box 460 | Middlebury, IN 46540
See dealer for further information and prices. All information in this brochure and on www.jayco.com is the latest available at the time of publication approval. Jayco reserves the right to make changes and to discontinue models without notice or obligation. Photography may show optional equipment or props used for decoration purposes only. RVs built for sale in Canada may differ to conform to Canadian codes. JAYCO and the JAYCO BIRD IN FLIGHT are registered trademarks of Jayco, Inc. Printed in USA 09/25 ©2025 Jayco, Inc. 2033106

Jayco - Part of Jayco Family of Companies