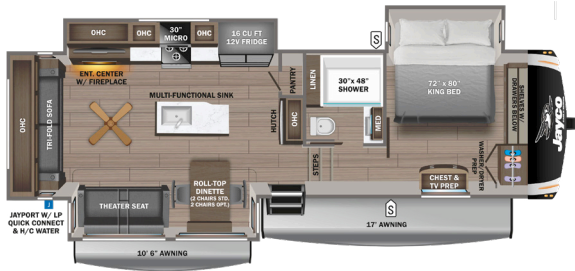


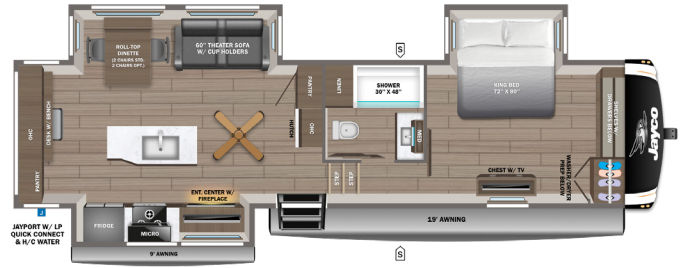
EAGLE FIFTH WHEEL



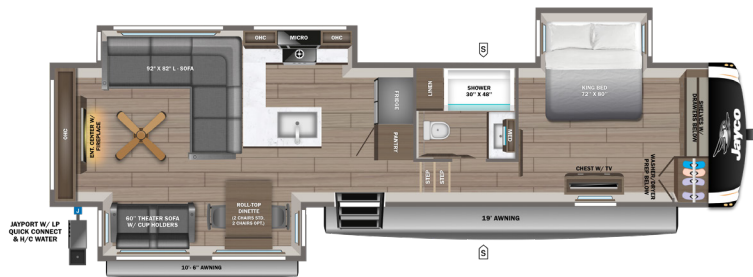
321RSTS OPTIONS: A, C, D



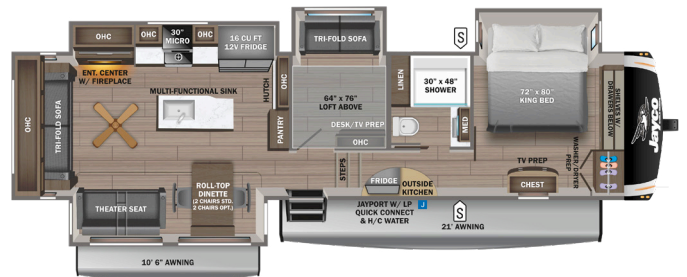
325MKTS OPTIONS: B, C, D



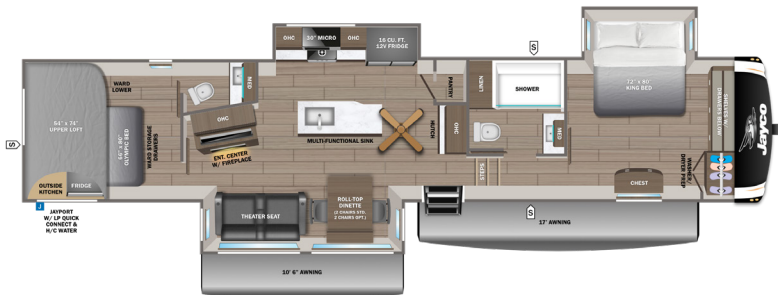
335LSTS OPTIONS: A, C, D



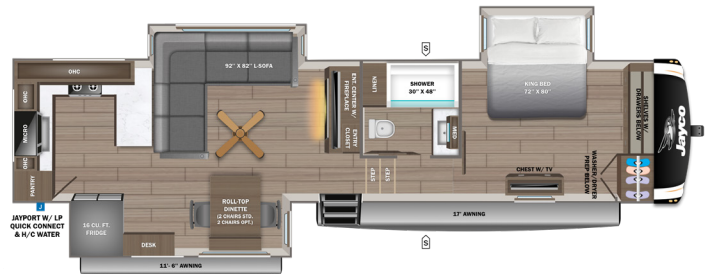
355MBQS OPTIONS: A, B, C, D



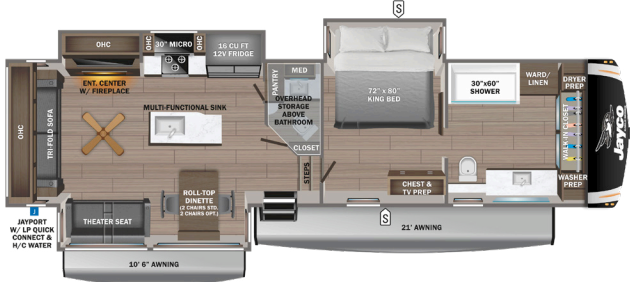
360DBOK OPTIONS: A, B, C, D



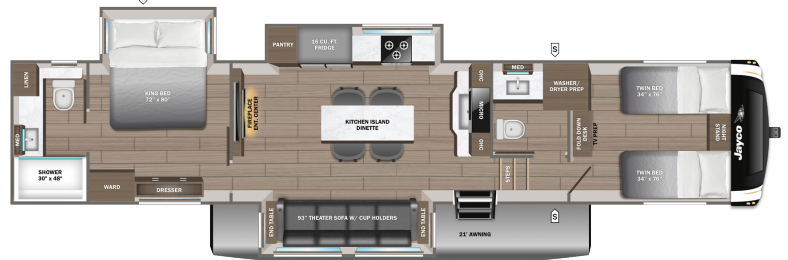
365UKTS OPTIONS: A, C, D



370FBTS OPTIONS: A, C, D



367TBTS OPTIONS: C, D



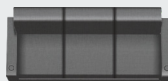
OPTIONS

A



Dinette

B



Triple Recliner

C



Olympic Bed

D



Griddle/Table



MICRO

OHC

FRIDGE

WARD

STORAGE

MICROWAVE

OVERHEAD CABINETS

REFRIGERATOR

WARDROBE

STANDARDS & OPTIONS

EXTERIOR

1.5 in. fresh water drain valve
5 in. Magnum Truss™ with Plywood Roof Decking
Alpha Ply TPO Roof membrane (thickest roof membrane with Limited Lifetime Warranty)
50-amp detachable power cord
LED lighting in pass through area
Auto-grade vinyl graphics
Automotive style front cap with max turn radius (painted on select models)
Black tank flush
Additional dump valve at termination
LED light & Switch at Termination
Climate Shield™ zero-degree tested weather protection:
Fully enclosed and heated underbelly (ducted)
35K BTU furnace
Double layer fiberglass batt insulation in ceiling and floor
Double sided radiant barrier insulation (roof, floor and behind cap)
PEX plumbing
Commercial grade rubber flooring in pass through area
Dual 30 lb. LP bottles
Factory installed roof ladder
Galvanized steel coated outside kitchens
HELIX Cooling System™ (industry exclusive):
Insulated dual duct design
Directional and closeable A/C vents
Larger return air vents with user accessible filters
Independent satellite and cable hookups (outside kitchens and/or pass through storage areas)
LED exterior lighting package
LP quick connect for gas griddle (next to JayPort)
Metal slam latch baggage doors
Nautilus 2.5 water connections
Nitrogen filled undermount spare tire (16 in.)
Quick connect water connections (door side hot/cold and off door side cold only)
Slide topper/awning prep
Stronghold VBL™ walls (laminated sidewalls, rear walls and slide out walls)
Rear camera prep

INTERIOR

2-piece high gloss bathroom surround
Teak seat shower prep
5/8 in. Tongue-and-groove plywood flooring
75 lb. Full extension drawer guides
30 in. x 22 in. shower skylight
Bedroom TV, SAT, & cable prep
C.P.A.P. prepped bedroom (both sides)

Extra 120V power outlets in kitchen and slide rooms (where applicable)
Gas strutted under bed storage
High sheen handcrafted door/drawer fronts
Medicine cabinet with custom framed mirror
Kitchen faucet with pull-out sprayer
Porcelain foot flush toilet
Residential vinyl flooring throughout (no carpet)
Theater seating (select models)
Tri-fold hide-a-bed sofa with residential memory foam sleep surface (select models)
USB-C 12V charging ports (multiple locations throughout)
Water shut off at all faucet locations
NuvoH2O water treatment system (filters included)
100% no floor heat vents
4 in. Interior ceiling fan lighting (4000 lumen)

CUSTOMER VALUE PACKAGE (MANDATORY)

15K BTU "Whisper Quiet" A/C and bedroom A/C prep
4K Ultra LED HD Smart TV in living room
50-amp service with dual A/C ducts
60K BTU on-demand tankless water heater
Custom-machined aluminum rims
Electric patio awning
Hidden hinges on cabinet doors
Interior & exterior "Blue Sync" Audio Connect with MB Quart Sound (TV & Phone)
Keyed-Alike™ lock system
MORryde Step Above™ entrance steps (main entrance)
Rain-proof bathroom power vent
Rear 2 in. towing receiver (4-pin connector on fifth wheels only)
Winegard Air 360 + Antenna & Router Prep (NOW 5G)
Inverter pre-wire (multiple locations throughout)
Overlander I Solar Package (200W panel and 30-amp solar controller)

LUXURY PACKAGE (MANDATORY)

Blackout roller shades with reflective side throughout
Electric auto-leveling
JayPort® 2 in. mount (for outside accessories)
Residential-style glass shower door
Washer/dryer prep (select models)
GE® 30 in. over-the-range black and stainless microwave with exhaust fan
GE® black and stainless 21 in. range with edge-to-edge grates
Multi-function "All-in-One" black stainless-steel kitchen sink
Magnetic catches for all drawers and doors

Solid-surface kitchen countertop(s)
LED fireplace with 5,000 BTU electric space heater
Exterior light and outlet at the JayPort® location

COMFORT PLUS PACKAGE (MANDATORY)

15K BTU "Whisper Quiet" bedroom A/C
Bluetooth light switches throughout
King bed (72 x 80 in.) mattress with under-bed storage
Larger exterior baggage door sizes
Second power awning with dimmable LED lights (select models)
16 cu. ft. 12V refrigerator
LED lights with dimmer switches and motion activation (throughout interior)
SpartanLync™ TPMS monitoring system
JAYCOMMAND® "Smart RV System" (Pro Tablet)
Custom padded headboard with cellphone holders
Extended roll-top dinette table

4-STAR HANDLING PACKAGE (MANDATORY)

Dexter® axles with NEV-R-Adjust® brakes and E-Z Lube® hubs
16 in. "H" rated tires
MORryde® CRE-3000™ rubberized suspension
Wet bolt fasteners with bronze bushings

OPTIONS

15K BTU bedroom A/C
HALO 22 in. outside griddle with deep sink attachment for Jayport™ System
Booth-dinette (select models)
Dry Camping Package (generator prep) (extra LP capacity)
Extreme Weather Package with 120W heat pads & 12v heat tape on freshwater line
Frameless dual-pane windows
Overlander II Solar Package: (2) 200W Panels, MPPT 30-AMP solar controller and 1800w Inverter)
Residential 66 in. X 80 in. Olympic-sized mattress
Furniture cup holder tables (1 pair)
Dexter® ABS Brake System with anti-sway
Triple reclining sofa in place of dinette (select models)
(2) Foldable dinette chairs

*Indicates split tanks

FLOORPLAN	TOTAL EXTERIOR LENGTH	EXTERIOR WIDTH	EXTERIOR HEIGHT (WITH A/C)	INTERIOR HEIGHT (MAIN)	INTERIOR HEIGHT (UPPER DECK)	UNLOADED VEHICLE WEIGHT	DRY HITCH WEIGHT	GVWR	CARGO CARRYING CAPACITY	FRESH WATER CAPACITY	GRAY WASTE WATER CAPACITY	BLACK WASTE WATER CAPACITY	SLEEPING CAPACITY
321RSTS	36' 7"	8' 1"	12' 8"	8' 8"	6' 7"	11,145	2,270	13,200	2,055	81	87*	50	2-4
325MKTS	34' 8"	8' 1"	13' 4"	8' 8"	6' 7"	10,645	2,081	12,900	2,255	81	87*	50	1-2
335LSTS	38' 5"	8' 1"	12' 9"	8' 7"	6' 7"	11,540	2,350	13,800	2,260	81	87*	50	2-4
355MBQS	42' 1"	8' 1"	13' 2"	8' 7"	6' 7"	13,115	2,580	15,400	2,285	81	87*	50	8-10
360DBOK	43' 1"	8' 1"	13' 4"	8' 7"	6' 7"	12,800	2,695	14,995	2,195	81	87*	87*	4-6
365UKTS	37' 2"	8' 1"	13' 3"	8' 8"	6' 7"	11,135	2,085	13,400	2,265	81	87*	50	4-6
370FBTS	40' 8"	8' 1"	12' 8"	8' 8"	6' 7"	12,195	2,355	14,300	2,105	81	87*	50	2-4
367TBTS	TBD	TBD	TBD	TBD	TBD	TBD	TBD	TBD	TBD	TBD	TBD	TBD	2-4

Meet your Jayco Dealer



Scan QR code for specification definitions

Some specs at the time of print may include estimates. For the most updated information, please visit [Jayco.com](https://www.jayco.com)

Jayco, Inc. | P.O. Box 460 | Middlebury, IN 46540

See dealer for further information and prices. All information in this brochure and on www.jayco.com is the latest available at the time of publication approval. Jayco reserves the right to make changes and to discontinue models without notice or obligation. Photography may show optional equipment or props used for decoration purposes only. RVs built for sale in Canada may differ to conform to Canadian codes. JAYCO and the JAYCO BIRD IN FLIGHT are registered trademarks of Jayco, Inc. Printed in USA 10/25 ©2025 Jayco, Inc. 2033108

Jayco - Part of Jayco Family of Companies

