

SEISMIC TOY HAULER



OPTIONS

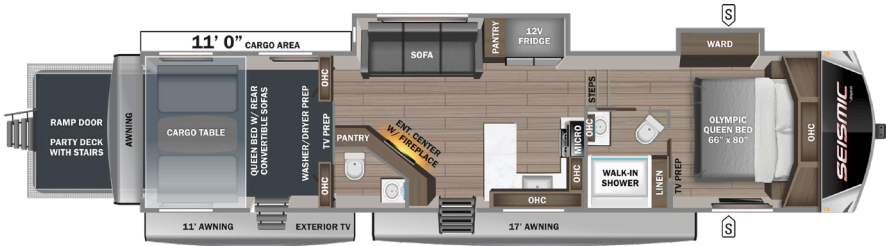
A

Queen Bed

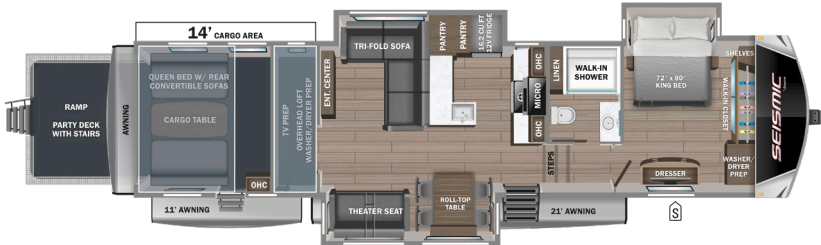
B

Half Bath with Retractable Walls

359



395 OPTIONS: A, B



S

STORAGE

MICRO

MICROWAVE

OHC

OVERHEAD CABINETS

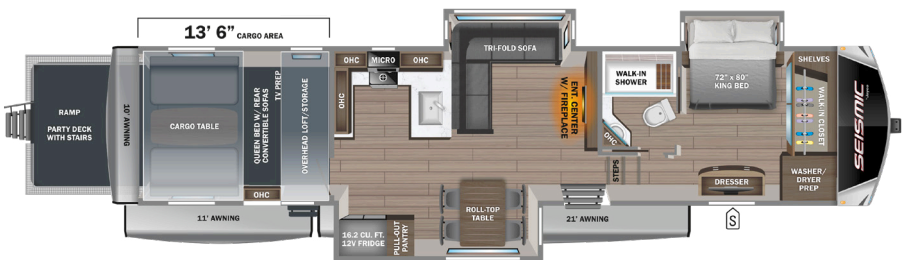
FRIDGE

REFRIGERATOR

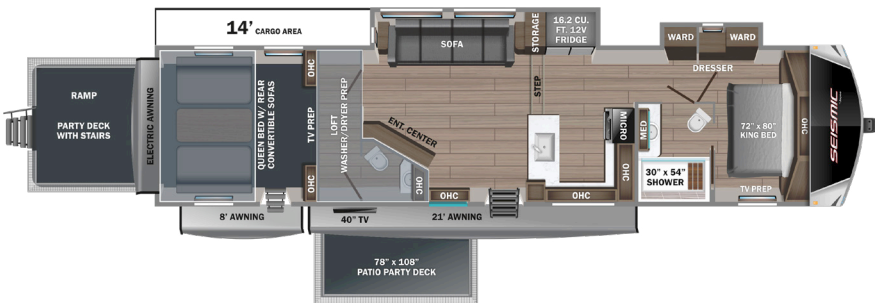
WARD

WARDROBE

399 OPTIONS: A, B



413



STANDARDS & OPTIONS

EXTERIOR

102 in. wide-body structural steel I-beam construction
 Stronghold VBL™ aluminum-framed and vacuum-bond laminated gel-coated fiberglass exterior walls and slide room end walls
 Magnum Truss™ XL6™ Roof System (strongest tested roof in the industry) with PVC roof membrane system (limited lifetime warranty)
 Painted fiberglass front cap with clear coat and built-in specialty LED lighting
 Custom automotive-grade vinyl exterior graphics package
Climate Shield™ zero-degree tested weather protection includes:
 35K BTU output furnace
 Double-layer fiberglass batt insulation in ceiling and floor
 Double-sided radiant barrier insulation (roof and floor)
 Fully enclosed and heated underbelly (ducted)
 NPS - Powered by Yamaha® 6,000-watt generator with built-in pure sine inverter (gas/C.A.R.B. certified)
 6-point hydraulic auto-leveling system
 Battery disconnect switch
 Detachable shore power cord
 Dual 30 lb. propane bottles with auto regulator
 Water heater bypass
 LP quick-connect
 Exterior marine-grade speakers
 Digital TV antenna
 Folding roof ladder
 LED exterior lighting package
 JaySMART™ (Safety Markers And Reverse Travel) LED lighting (patented)
HELIX Cooling System™ (industry exclusive) includes:
 Three exterior-mounted 13,500 BTU soft-start, high-efficiency, ducted A/Cs (living room and bedroom)
 Directional and closeable A/C vents
 Insulated dual-duct design
 Pass-through storage with Slam-latch™ baggage doors
 Under-mounted spare tire
Fully enclosed, LED-lighted universal docking center with:
 Black tank flush
 Winterization and sanitation hookups
 Quick-connect outside shower
 Satellite prep

INTERIOR

Olympic king bed (359 & 413)
 Residential quilted bedspread

Gas-strutted under-bed storage
 Washer/dryer prep
 12V charging station
 Bathroom skylight
 Central command center with built-in tank monitoring
 Custom interior design (Dune Gray)
 LED interior lighting throughout
 LED fireplace with electric space heater (select models)
 No in-floor heat registers throughout the coach
 Vinyl flooring in slideouts (no carpet)
 Residential vinyl flooring (made in the USA)
 Hardwood safety handrail on hallway steps
 Carbon monoxide and LP detector
 5/8 in. tongue-and-groove joined plywood main floor decking and 3/8 in. tongue-and-groove plywood roof decking
 Handcrafted and glazed doors, drawers, and trim
 Solid hardwood cabinet doors
 Residential finished dovetail-jointed drawers throughout
 Heavy-duty, 75 lb., full-extension, steel ball-bearing drawer guides
 SuperSofa™ or theater seats with heat, massage, and LED lighting (select models)
 Stain-protected fabric on all furniture
 Residential "Do it all" sink with pull-out kitchen faucet, glass rinse, and vegetable rinse
 Porcelain foot-flush toilet
 Inverter pre-wire

CUSTOMER VALUE PACKAGE (MANDATORY)

On-demand tankless hot water heater
 50-amp service
 Overlander II Solar Package: 30-amp solar controller with (2) roof-mounted 200W solar panels and a 1,800W inverter
 17 cu. ft. 12V refrigerator
 30 in. space-saver microwave
 Residential 21 in. oven with three burners
 4K Smart LED HDTV with fully digital HDMI® output
 Touch-screen Bluetooth® stereo with four speakers
 Electric patio awning with integrated RGB LED lights (multi-color with remote control)
 MORryde® strut-assisted fold-away entrance steps (main entrance)
 Custom black, machined aluminum rims
 Keyed-Alike™ lock system

Bathroom power vent
 Night roller shades
 Soft close, hidden hinges and magnet door catches on cabinet doors

5-STAR HANDLING PACKAGE (MANDATORY)

17.5 in., 16-ply "H" rated tires
 Dexter® axles with ABS and Tow Assist - includes Nev-R-Adjust® brakes and E-Z Lube® hubs
 MORryde® CRE-3000™ Suspension System
 Rota-Flex® king pin
 Wet bolt fasteners, bronze bushings, and 4K lb. leaf springs
 2nd electric patio awning with integrated RGB LED lights (multi-color with remote control)

RAMP AND CARGO EQUIPMENT

30 gal. fuel tank with timer
 6,000 lbs. garage D-rings mounted to steel frame
 HappiJac® electric-lift queen beds/convertible sofas with folding armrests and cup holders
 Three-season removable garage wall/doors
 Tuff-ply™ rubberized garage floor liner
 Weather-resistant rear ramp door and patio with anti-slip, non-skid flooring
 Powder coated aluminum ramp patio kit with exterior steps
 Rear electric patio awning
 LED high-intensity ramp lights
 Ram air vents and power roof vent

OPTIONS

Frameless, dual-pane, tinted safety-glass windows
 Outside HALO™ griddle for JayPort® system (select models)
 Queen residential foam-top mattress (395 & 399)
 Retractable half-bath wall in garage (395 & 399)

*Indicates split tanks

FLOORPLAN	TOTAL EXTERIOR LENGTH	EXTERIOR WIDTH	EXTERIOR HEIGHT (WITH A/C)	INTERIOR HEIGHT (MAIN)	INTERIOR HEIGHT (UPPER DECK)	UNLOADED VEHICLE WEIGHT	DRY HITCH WEIGHT	GVWR	CARGO CARRYING CAPACITY	FRESH WATER CAPACITY (INCLUDING WATER HEATER)	GRAY WASTE WATER CAPACITY	BLACK WASTE WATER CAPACITY	SLEEPING CAPACITY
359	41' 8"	8' 6"	13' 4"	8' 3"	6' 4"	13,390	2,950	17,500	4,110	106	87*	87*	4-6
395	47' 3"	8' 6"	13' 3"	8' 3"	6' 5"	15,735	3,485	20,400	4,665	106	87*	87*	6-8
399	46' 9"	8' 6"	13' 4"	8' 4"	6' 4"	15,390	3,310	20,400	5,010	106	87*	87*	6-8
413	47' 0"	8' 6"	13' 3"	8' 3"	6' 5"	15,985	3,470	20,800	4,815	106	87*	87*	4-6

Meet your Jayco Dealer



Scan QR code for specification definitions



Some specs at the time of print may include estimates. For the most updated information, please visit [Jayco.com](https://www.jayco.com)

Jayco, Inc. | P.O. Box 460 | Middlebury, IN 46540

See dealer for further information and prices. All information in this brochure and on www.jayco.com is the latest available at the time of publication approval. Jayco reserves the right to make changes and to discontinue models without notice or obligation. Photography may show optional equipment or props used for decoration purposes only. RVs built for sale in Canada may differ to conform to Canadian codes. JAYCO and the JAYCO BIRD IN FLIGHT are registered trademarks of Jayco, Inc. Printed in USA 10/25 ©2025 Jayco, Inc. 2033111

Jayco - Part of Jayco Family of Companies