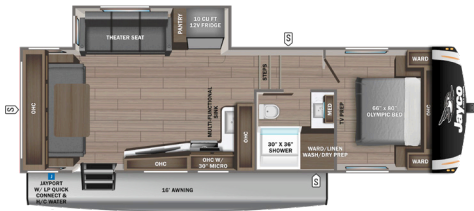


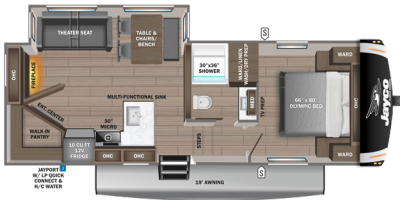
EAGLE HT FIFTH WHEEL



25RUC OPTION: B



26REC OPTIONS: A, B, C



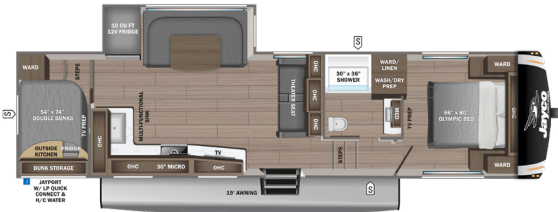
27MLC OPTIONS: B, C



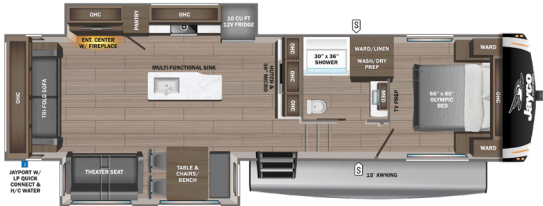
28CRT OPTIONS: A, B



29ddb OPTIONS: B, C, E



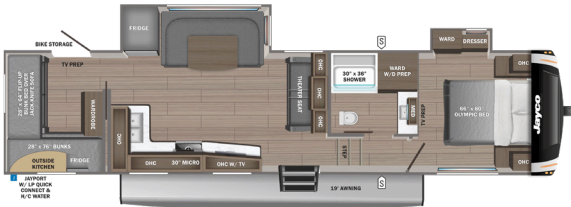
29RLC OPTIONS: A, B



30CRT OPTIONS: A, B



310CD OPTIONS: B, C, E



OPTIONS

A



Dinette

B



Griddle/Table

C



Tri-fold Sofa

D



Theater Seat

E



Triple Recliner



STORAGE

MICRO

MICROWAVE

OHC

OVERHEAD CABINETS

FRIDGE

REFRIGERATOR

WARD

WARDROBE

STANDARDS & OPTIONS

EXTERIOR

- 5 in. fresh water drain valve
- 5 in. Magnum Truss™ with plywood roof decking
- AlphaPly TPO roof membrane (thickest roof membrane with limited lifetime warranty)
- 50-amp detachable power cord
- LED lighting in pass-through area
- Auto-grade vinyl graphics
- Automotive-style front cap with max turn radius (painted on select models)
- Black tank flush
- Additional dump valve at termination
- LED light and switch at termination
- Climate Shield™ zero-degree tested weather protection:**
 - Fully enclosed and heated underbelly (ducted)
 - 5K BTU furnace
 - Double-layer fiberglass batt insulation in ceiling and floor
 - Double-sided radiant barrier insulation (roof, floor, and behind cap)
 - PEX plumbing
- Commercial-grade rubber flooring in pass-through area
- Dual 30 lb. LP bottles
- Factory-installed roof ladder
- Galvanized steel-coated outside kitchens
- HELIX Cooling System™ (industry exclusive):**
 - Insulated dual duct design
 - Directional and closeable A/C vents
 - Larger return air vents with user-accessible filters
- Independent satellite and cable hookups (outside kitchens and/or pass-through storage areas)
- LED exterior lighting package
- LP quick-connect for gas griddle (next to JayPort®)
- Metal slam-latch baggage doors
- Nautilus 2.5 water connections
- Nitrogen-filled undermount spare tire (model/option varies: 15 in. or 16 in.)
- Quick-connect water connections (door-side hot/cold and off-door side cold only)
- Slide topper/awning prep
- Stronghold VBL™ walls (laminated sidewalls, rear walls, and slide-out walls)
- Rear camera prep
- 30 x 22 in. shower skylight

INTERIOR

- 2-piece high-gloss bathroom surround
- Teak seat shower prep
- 5/8 in. tongue-and-groove plywood flooring

- 75 lb. full-extension drawer guides
- Bathroom skylight
- Bedroom TV, SAT, and cable prep
- C.P.A.P.-prepped bedroom (both sides)
- Extra 120V power outlets in kitchen and slide rooms (where applicable)
- Gas-strutted under-bed storage
- High-sheen handcrafted door/drawer fronts
- Medicine cabinet with custom-framed mirror
- Kitchen faucet with pull-out sprayer
- Porcelain foot-flush toilet
- Residential vinyl flooring throughout (no carpet)
- Theater seating (select models)
- Tri-fold hide-a-bed sofa with residential memory foam sleep surface (select models)
- USB-C 12V charging ports (multiple locations throughout)
- Water shut off at all faucet locations
- NuvoH2O Water Treatment System (filters included)
- 100% no floor heat vents
- 4 in. interior ceiling fan lighting (4000K lumen)

CUSTOMER VALUE PACKAGE (MANDATORY)

- 15K BTU "Whisper Quiet" A/C and bedroom A/C prep
- 4K Ultra LED HD Smart TV in living room
- 50-amp service with dual A/C ducts
- 60K on-demand tankless water heater
- Custom-machined aluminum rims
- Electric patio awning (integrated dimmable LED lights with JAYCOMMAND™)
- Hidden hinges on cabinet doors
- Interior & exterior "Blue Sync" Audio Connect with MB Quart sound (TV & phone)
- Keyed-Alike™ lock system
- MORryde Step Above™ entrance steps (main entrance)
- Rain-proof bathroom power vent
- Rear 2 in. towing receiver (4-pin connector on fifth wheels only)
- Winegard Air 360 + antenna & router prep (NOW 5G)
- Inverter pre-wire (multiple locations throughout)
- Overlander I Solar Package** (200W panel and 30-amp solar controller)

LUXURY PACKAGE (MANDATORY)

- Blackout roller shades with reflective side throughout
- Electric auto-leveling
- GE 10 cu. ft. 12V refrigerator with black glass front
- JayPort® 2 in. mount (for outside accessories)
- Residential-style glass shower door
- Washer/dryer prep (select models)
- GE 30 in. over-the-range black and stainless microwave with exhaust fan
- GE black and stainless 21 in. range with edge-to-edge grates
- Multi-function "All-in-One" black stainless steel kitchen sink
- Residential 66 x 80 in. OLYMPIC size mattress
- Magnetic catches for all drawers and doors
- Solid surface kitchen countertop(s)
- LED fireplace with 5K BTU electric space heater
- JAYCOMMAND™ with monitor switch panel
- Exterior light and outlet at the JayPort® location

4-STAR HANDLING PACKAGE (MANDATORY)

- Dexter® axles with NEV-R-Adjust® brakes and E-Z Lube® hubs
- 15 in. "E" rated tires or 16 in. "H" rated tires
- MORryde® CRE-3000™ rubberized suspension
- Wet bolt fasteners with bronze bushings

OPTIONS

- 15K BTU bedroom A/C
- HALO™ 22 in. outside griddle with deep sink attachment for JayPort® system
- Booth dinette (select models)
- Dry camping package (generator prep; extra LP capacity)
- Extreme Weather Package with 120 heat pads and 12V heat tape on freshwater line
- Free-standing table with leaf, two chairs, and bench seat
- Overlander II Solar Package: (2) 200W panels, 30-amp controller, and 1800W inverter
- Theater seating in place of tri-fold sofa (select models)
- Furniture cup holder tables (1 pair)
- Dexter® ABS brake system with anti-sway
- Triple reclining sofa in place of dinette (select models)
- SpartanLync™ Tire Pressure Monitoring System

*Indicates split tanks
**2025 specs listed

| FLOORPLAN | TOTAL EXTERIOR LENGTH | EXTERIOR WIDTH | EXTERIOR HEIGHT (WITH A/C) | INTERIOR HEIGHT (MAIN) | INTERIOR HEIGHT (UPPER DECK) | UNLOADED VEHICLE WEIGHT | DRY HITCH WEIGHT | GVWR | CARGO CARRYING CAPACITY | FRESH WATER CAPACITY | GRAY WASTE WATER CAPACITY | BLACK WASTE WATER CAPACITY | SLEEPING CAPACITY |
|-----------|-----------------------|----------------|----------------------------|------------------------|------------------------------|-------------------------|------------------|--------|-------------------------|----------------------|---------------------------|----------------------------|-------------------|
| 25RUC | 29' 9" | 8' 0" | 12' 3" | 8' 5" | 6' 4" | 8,120 | 1,640 | 9,800 | 1,680 | 52 | 82* | 45 | 2-4 |
| 26REC | 29' 3" | 8' 1" | 12' 5" | 8' 5" | 6' 4" | 8,355 | 1,725 | 9,995 | 1,640 | 52 | 82* | 45 | 4-6 |
| 27MLC | 32' 9" | 8' 1" | 12' 6" | 8' 5" | 6' 4" | 8,625 | 1,765 | 10,400 | 2,860 | 52 | 82* | 45 | 2-4 |
| 28CRT | 32' 10" | 8' 1" | 12' 5" | 8' 5" | 6' 4" | 9,595 | 1,990 | 11,400 | 1,805 | 52 | 82* | 45 | 2-4 |
| 29DDB | 34' 7" | 8' 1" | 12' 11" | 8' 5" | 6' 4" | 9,240 | 1,685 | 10,995 | 1,755 | 52 | 82* | 45 | 8-10 |
| 29RLC | 34' 0" | 8' 1" | 12' 3" | 8' 5" | 6' 4" | 9,485 | 1,635 | 11,200 | 1,715 | 52 | 82* | 45 | 4-6 |
| 30CRT | 34' 0" | 8' 1" | 12' 3" | 8' 5" | 6' 4" | 9,725 | 1,915 | 11,600 | 1,875 | 52 | 82* | 45 | 2-4 |
| **31QCD | 36' 8" | 8' 1" | 12' 6" | 8' 5" | 6' 4" | 9,817 | 2,215 | 11,700 | 1,883 | 52 | 82* | 45 | 5-7 |

Meet your Jayco Dealer



Scan QR code for specification definitions

Some specs at the time of print may include estimates. For the most updated information, please visit [Jayco.com](https://www.jayco.com)

Jayco, Inc. | P.O. Box 460 | Middlebury, IN 46540
See dealer for further information and prices. All information in this brochure and on www.jayco.com is the latest available at the time of publication approval. Jayco reserves the right to make changes and to discontinue models without notice or obligation. Photography may show optional equipment or props used for decoration purposes only. RVs built for sale in Canada may differ to conform to Canadian codes. JAYCO and the JAYCO BIRD IN FLIGHT are registered trademarks of Jayco, Inc. Printed in USA 09/25 ©2025 Jayco, Inc. 2033107

Jayco - Part of Jayco Family of Companies

