

Jayco | 2024 Jay Flight West Travel Trailer

# JAY FLIGHT WEST

#1 SELLING TRAVEL TRAILER FOR 15 YEARS



**2+3**  
YEAR | YEAR  
WARRANTY



# INTERIOR DESIGN



## CLASSIC FARMHOUSE



Main Wood



Accent Wood



Floor



Countertop



Main Fabric



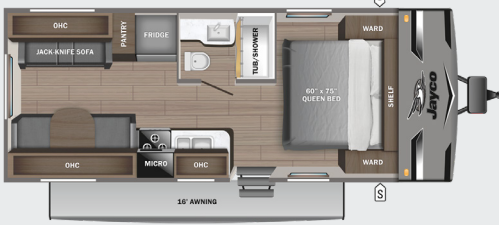
Accent Fabric



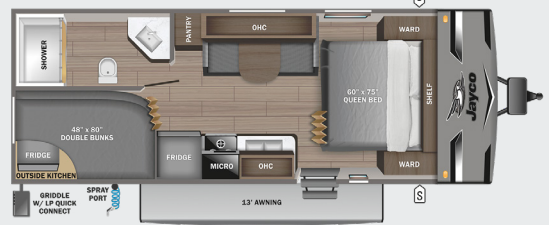


# JAY FLIGHT WEST

2120BW



224BHW



MICRO  
OHC  
FRIDGE  
WARD

STORAGE  
MICROWAVE  
OVERHEAD CABINETS  
REFRIGERATOR  
WARDROBE

### OPTIONS

A



Hide-a-Bed

B



Theater Sofa

C



Table & Chairs

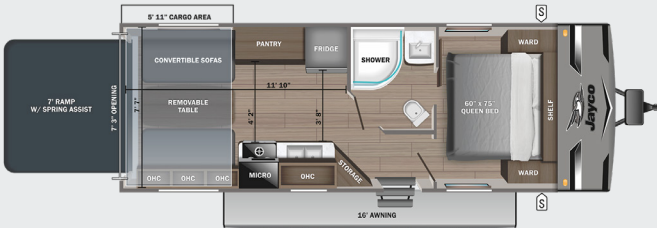
225MLSW



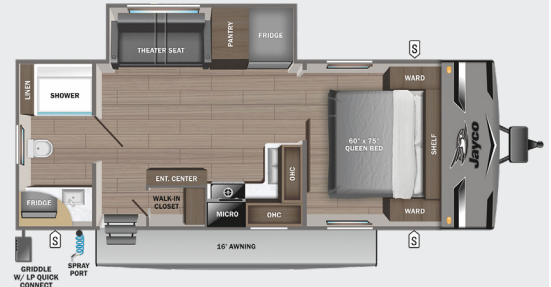
235MBHW



236THW

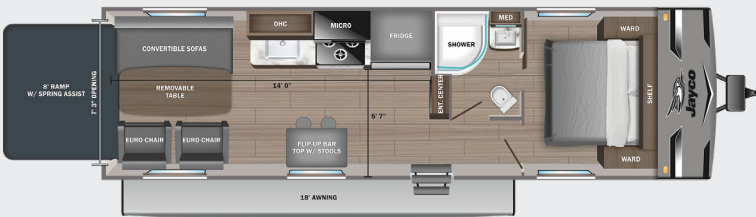


240RBSW



OPTION: A

255THW



264BHW

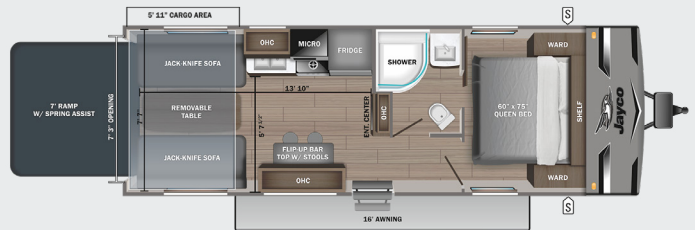


265RLSW

OPTIONS: A, B, C

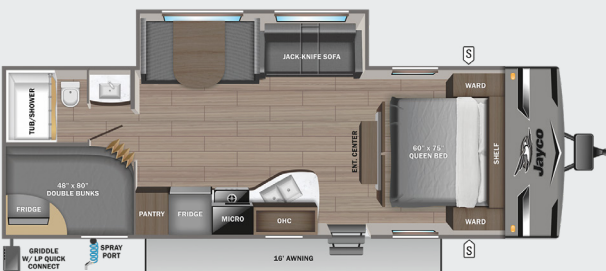


265THW



267BHSW

OPTIONS: A, B, C



286BHSW

OPTIONS: A, B, C



# STANDARDS & OPTIONS

## EXTERIOR

(2) 20 lb. propane bottles with cover  
30-amp service  
5/8 in. tongue-and-groove plywood floor decking  
Axles with electric, self-adjusting brakes and easy-lube hubs  
Enclosed and heated underbelly  
Exterior TV mount and bracket  
Fully integrated A-frame  
Galvanized steel, impact-resistant wheel wells  
I-Class™ cambered structural steel I-beams  
Large exterior downspouts  
Propane quick connect (outside gas grill prep)  
Magnum Truss™ Roof system with plywood decking  
PVC roofing membrane (limited lifetime warranty)

## INTERIOR

300 lb. rated bunk beds (select models)  
4 in. thick bunk mats (select models)  
600 lb. rated bunk beds (double bunks)  
81 in. ceiling height  
Heavy-duty, 75 lb., full-extension, steel ball-bearing drawer guides  
J-Steel™ jackknife sofa with armrest and cup holders (most models)  
Main bed struts  
Plywood bed platforms  
Privacy curtains in bunk areas (select models)  
Queen mattress  
Residential-style kitchen countertops  
Shower curtain with curved shower track (select models)

Shower/tub surround  
Solid hardwood cabinet doors  
USB charging station  
Vented bunk windows (select models)  
Vinyl flooring throughout (including slide floors)  
Window shades  
Wooden bedroom doors (select models)

## CUSTOMER VALUE PACKAGE (MANDATORY)

13.5K BTU A/C  
AM/FM/Bluetooth® stereo  
Backup and side view camera prep  
Bathroom medicine cabinet  
Bathroom power vent  
Bathroom skylight  
Black tank flush  
Detachable power cord  
Fitted bed sheet  
Friction hinge entry door with window and shade prep  
G20 dark tinted privacy windows  
Goodyear® Endurance® tires (made in the USA)  
Inverter pre-wire  
Keyed-Alike™ entry and baggage doors  
Large main entry door grab handle  
LED exterior and interior lights  
Marine grade exterior speakers  
Microwave oven  
On-demand tankless water heater  
One-piece front fiberglass exterior wall  
Outside shower  
Oven with 3-burner recessed cooktop with glass cover

Overlander 1 Solar Package: (1) 200W solar panel and 30-amp digital controller  
Power awning with LED lights  
Power tongue jack  
Range hood  
Rock-Solid Stabilizer System  
Seamless countertops  
Sink cover  
Solid Step® entry steps (N/A 380DQS)  
Spare tire with cover

## BAJA EDITION PACKAGE (OPTIONAL) (N/A 236TH & 265TH)

(2) 30 lb. propane bottles  
Flipped axle  
16 in. Goodyear® off-road tires  
Triple steps

## OPTIONS

15,000 BTU A/C  
30 lb. propane bottles  
50-amp service  
Aluminum rims  
Baja Edition (N/A 236TH, 255TH and 265TH)  
Free standing table with 4 chairs (select models)  
Hide-a-bed with tri-fold mattress (select models)  
LED Smart TV  
Outside griddle with bumper mount (select models)  
Theatre seating (select models)

\*Indicates split tanks  
\*\* 2023 specs shown

FLOORPLAN	EXTERIOR TRAVEL LENGTH	EXTERIOR WIDTH	EXTERIOR HEIGHT (WITH A/C)	INTERIOR HEIGHT	UNLOADED VEHICLE WEIGHT	DRY HITCH WEIGHT	GVWR	CARGO CARRYING CAPACITY	FRESH WATER CAPACITY	GRAY WASTE WATER CAPACITY	BLACK WASTE WATER CAPACITY	SLEEPING CAPACITY
212QBW	25' 8"	8' 0"	10' 6"	6' 9"	4,350	465	5,000	1,650	84	39	32.5	3-5
224BHW	27' 1"	8' 0"	10' 6"	6' 9"	4,620	560	6,100	1,480	84	39	39	6-8
225MLS	27' 1"	8' 0"	11' 0"	6' 9"	5,265	500	6,700	1,435	76	40	40	4-6
235MBHW	27' 10"	8' 0"	11' 0"	6' 9"	5,440	585	6,950	1,510	76	40	40	5-7
**236THW	28' 4"	8' 0"	10' 7"	6' 9"	5,230	890	8,000	2,770	76	40	40	4-6
240RBSW	27' 4"	8' 0"	11' 0"	6' 9"	5,815	715	7,500	1,685	76	78*	39	3-5
255THW	30' 0"	8' 0"	12' 9"	8' 5"/7' 1"	5,615	835	8,750	3,135	84	40	40	2-4
264BHW	29' 5"	8' 0"	10' 5"	6' 9"	4,840	540	6,500	1,660	84	39	39	7-9
265RLSW	31' 2"	8' 0"	11' 2"	6' 9"	6,205	790	7,850	1,645	84	39	39	6-8
265THW	30' 4"	8' 0"	10' 6"	6' 9"	5,320	850	8,000	2,280	84	39	39	4-6
267BHSW	30' 4"	8' 0"	10' 11"	6' 9"	5,905	790	7,600	1,695	76	39	39	8-10
286BHSW	33' 4"	8' 0"	11' 3"	6' 9"	6,405	835	8,150	1,745	84	78*	39	8-10

Meet your Jayco Dealer



Scan QR code for specification definitions

Some specs at the time of print may include estimates. For the most updated information, please visit [Jayco.com](http://Jayco.com)

Jayco, Inc. | P.O. Box 460 | Middlebury, IN 46540

See dealer for further information and prices. All information in this brochure and on [www.jayco.com](http://www.jayco.com) is the latest available at the time of publication approval. Jayco reserves the right to make changes and to discontinue models without notice or obligation. Photography may show optional equipment or props used for decoration purposes only. RVs built for sale in Canada may differ to conform to Canadian codes. JAYCO and the JAYCO BIRD IN FLIGHT are registered trademarks of Jayco, Inc. Printed in USA 3/24 ©2024 Jayco, Inc.



Jayco - Part of Jayco Family of Companies